



Directory 2020



Thank you for considering JB Safesite as your training provider. Our staff have many years of experience in their professional fields as well as specialising in training.

We are constantly reviewing and updating our training material and techniques to meet our client's needs, to ensure our clients are investing in a service which will enhance their business. We do this internally and externally through our own external industry experts and our accrediting organisations, all of which ensures that our products, whether regulated by Ofqual, SQA or internally, are of the highest standard.

admin@jbsafesite.com

www.jbsafesite.com

01738 840 304

07504 298 560



The Royal
Environmental
Health Institute
for Scotland



Contents

Training

First Aid Courses

RQF Level 3 Award in First Aid at Work	6
RQF Level 3 Award in Emergency First Aid at Work	7
RQF Level 3 Award in Emergency First Aid at Work (Forestry)	8
RQF Level 3 Award in Paediatric First Aid	9
RQF Level 3 Award in Emergency Paediatric First Aid	10
RQF Level 2 Award in Citizen Aid	11
RQF Level 2 Award in Basic Life Support and AED (Defibrillator)	12
RQF Level 2 Award in Basic Life Support and Anaphylaxis	13
RQF Level 2 Award in Activities First Aid	14
RQF Level 3 Award in First Response Emergency Care	15

Fire Courses

RQF Level 1 Award in Fire Safety	17
RQF Level 2 Award in Fire Safety (Fire Warden)	18

Handling Training

RQF Level 2 Award in Safe Manual Handling	19
RQF Level 2 Award in Safe Moving and Handling of People	20

Workplace Health and Safety

RQF Level 1 Award in Workplace Health & Safety	21
RQF Level 2 Award in Workplace Health & Safety	22
RQF Level 3 Award in Workplace Health & Safety	23
RQF Level 3 Award in Workplace Risk Assessment	24
RQF REHIS Level 5 Award in Elementary Health & Safety	25
RQF Level 2 Award in Health & Safety for Social Care	26
RQF Level 2 Award in Control of Substances Hazardous to Health	27
BAF Safe Use of Abrasive Wheels on Hand Held Tools	28
RQF Level 2 Award in Working at Heights Awareness	29
Plant and Vehicle Marshal (Banksman)	30

Construction Training

CITB Health & Safety Awareness	31
CITB Site Supervisors Safety Training Scheme	32
CITB Site Managers Safety Training Scheme	33
CITB Directors Role for Health and Safety	34
CITB Site Environmental Awareness Training Scheme	35
RQF Level 1 Award in Health and Safety for Construction	36
BAF Safe Use of Abrasive Wheels (CITB Approved)	37
Confined Spaces in Construction (CITB Approved)	38
Service Avoidance in Excavations (CITB Approved)	39
Plant and Vehicle Marshal (Banksman) (CITB Approved)	40

Safety Services

CSCS Card Application	41
Construction Site Safety Documentation	42
PAT (Portable Electrical Appliance Testing)	43
Face Fit Testing	44



Meet the Team



Ewan Begg
Safety and Training Manager
Instructor

Laura Begg
Training Administration



John Ramsay
Clinical Governance
Medical / First Aid Instructor

Heather Sinclair
Internal Quality Auditor





Level 3 Award in First Aid at Work (RQF)

Course duration: 18 Hours (3 Days) or 12 Hours (2 Days) contact if a valid certificate is held

Validity: 3 Years

Accreditation: Quasafe Awards (Ofqual RQF Framework)

This course is relevant to any persons with duties, or may potentially hold duties as a first aider in the workplace under the Health & Safety (First Aid) Regulations 1981. Delegates are trained to a standard where they can administer First Aid in the workplace until more qualified help arrives when required. Our course is made relevant to your own work environment using example hazards and simulated potential injuries meaning your team are better prepared to deal with the emergencies you may be faced with.

Completion:

On successful completion of the course and final assessments, the delegate will receive the Ofqual regulated, Quasafe accredited, nationally recognised Level 3 First Aid at Work Certificate. Valid for 3 years. The HSE recommends that first aiders also undertake annual first aid update training.



Level 3 Award in Emergency First Aid at Work (RQF)

Course duration: 6 Hours contact

Validity: 3 Years

Accreditation: Quallsafe Awards (Ofqual RQF Framework)

Low risk workplaces such as small offices and shops may deem themselves not to require any staff to hold the full first aid at work certificate and may opt for this shorter course covering the essential skills.

Our course is made relevant to your own work environment using example hazards and potential injuries meaning your team are better prepared to deal with the emergencies you may be faced with.

Completion:

On successful completion of the course and final assessments, the delegate will receive the Ofqual regulated, Quallsafe accredited, nationally recognised Emergency First Aid at Work Certificate. This is valid for 3 years. The HSE recommends that first aiders also undertake annual first aid update training.



Level 3 Award in Emergency First Aid at Work +F (Forestry) (RQF)

Course duration: 2 Hours contact

Minimum Prerequisite requirement: Level 3 Emergency first Aid at Work

Validity: 3 Years

Accreditation: Quallsafe Awards (Ofqual RQF Framework)

A bolt on to any level 3 first aid course to include management of traumatic injuries such as crushing timber and chainsaw wounds. Training includes tourniquets and haemostatic agents.

Completion:

On successful completion of the course and final assessment, the delegate will receive the Ofqual regulated, Quallsafe accredited, nationally recognised EFAW / FAW + F Certificate. This is valid for 3 years. The HSE recommends that first aiders also undertake annual first aid update training.



Level 3 Award in Paediatric First Aid (RQF)

Course duration: 21 Hours contact

Validity: 3 Years

Accreditation: Quallsafe Awards (Ofqual QCF Framework)

The Early Years Foundation Stage (EYFS) Statutory Framework requires all early years providers to have at least one person who has a current and full paediatric first aid certificate on the premises and available at all times when children are present.

The QA Level 3 Award in Paediatric First Aid (RQF) has been specifically designed to meet the EYFS criteria, ideal for:

- Those who have gained a level 2 and/or level 3 childcare qualification and have entered into an early years setting
- Registered childminders and assistants
- Anyone who has a non-professional involvement with infants and children, such as parents, grandparents and want to learn key paediatric first aid skills.

Completion:

Successful candidates will understand the roles and responsibilities of the paediatric first aider, and will be equipped with the necessary skills to administer safe and effective treatment when dealing with a range of paediatric first aid situations.



Level 3 Award in Emergency Paediatric First Aid (RQF)

Course duration: 21 Hours contact

Validity: 3 Years

Accreditation: Quasafe Awards (Ofqual QCF Framework)

Designed in-line with the current Early Years Foundation Stage (EYFS) requirements, ideal for:

- Those who have gained a level 2 or 3 childcare qualification
 - Anyone who cares for infants and children, such as parents, guardians, grandparents or those who have an involvement with infants and children.
- Successful

Completion:

candidates will learn the roles and responsibilities of the emergency paediatric first aider, and will be equipped with the skills needed to deal with a range of paediatric first aid situations, such as performing CPR and controlling external bleeding.



Level 2 Award in Citizen Aid (RQF)

Course duration: 3 Hours contact

Validity: 3 Years

Accreditation: Quasafe Awards (Ofqual RQF Framework)

Would you know how to react in the event of a terrorist attack?

Whenever there is a shooting, stabbing or bomb explosion, the initial priority is understandably to ensure public safety. The QA Level 2 Award in citizenAID (RQF) has been specifically developed to teach immediate life-saving skills in extreme situations.

During this 3-hour course, candidates will have the opportunity to practise techniques for dealing with catastrophic bleeding and will be equipped with the skills and knowledge needed to prevent further victims.

Completion:

On successful completion, delegate will receive the, Quasafe accredited, nationally recognised Level 2 award valid for 3 years. But more importantly have skills to make a real difference in an extreme situation.



Level 2 Award in Basic Life Support and AED (Defibrillator) (RQF)

Course duration: 3 Hours contact

Validity: 1 Years

Accreditation: Qualsafe Awards (Ofqual RQF Framework)

A more in depth understanding of CPR defibrillation than that outlined in the standard first aid training courses, with more practical training. Ideal for an annual CPD update or those working in care environments.

Completion:

On successful completion of the course and final assessment, the delegate will receive the Ofqual regulated, Qualsafe accredited Certificate. valid for 3 years. More importantly, have gained skills that may make a difference in a life threatening situation.



Level 2 Award in BLS and Anaphylaxis (RQF)

Course duration: 6 Hours contact

Validity: 1 Years

Accreditation: Quallsafe Awards (Ofqual RQF Framework)

Anaphylaxis is a severe and life-threatening allergic reaction, which requires immediate medical attention. The QA Level 2 Award in Basic Life Support and Management of Anaphylaxis (RQF) has been designed for those who have a specific responsibility at work, or may be required at home or in voluntary and community activities, to provide basic life support and manage anaphylaxis in an emergency.

Completion:

Successful candidates will be able to recognise the signs and symptoms of anaphylaxis, and will be equipped with the vital skills needed to administer safe, prompt and effective treatment



Level 2 Award in Activities First Aid (RQF)

Course duration: 6 Hours contact

Validity: 3 Years

Accreditation: Quallsafe Awards (Ofqual RQF Framework)

Developed to meet the requirements of those working in an outdoor environment such as:

- Youth group leaders
- Sports coaches
- Outdoors instructors
- Mountain Leaders

Completion:

On successful completion of the course and final assessment, the delegate will be equipped to deal with a range of trauma and medical situations in a more remote environment, manage groups during an incident and arrange appropriate transport or rescue.

Level 3 Certificate in First Response Emergency Care (FREC) (RQF)

Course Duration: >35 Hours
Validity: 3 Years
Accreditation: Qualsafe
Awards (Ofqual
RQF
Framework)

Ideal as an alternative to the First Person on Scene Intermediate (FPOSi) qualification, the QA Level 3 Certificate in First Response Emergency Care (RQF) also forms part of a progressive suite of prehospital care qualifications that lead to the QA Level 6 Diploma in Paramedic Practice (RQF).



Endorsed by The Faculty of Pre-Hospital Care – The Royal College of Surgeons of Edinburgh, and fulfilling the competencies set out in the PHEM skills framework at descriptor level D, this fantastic qualification is perfect for a range of roles in emergency care, such as: Event Medical Responder, Emergency Care Support Worker and more.

The QA Level 3 Certificate in First Response Emergency Care (RQF) has been shortlisted for the Federation of Awarding Bodies (FAB) 'Qualification of the Year' Award 2018 and is one of the few first aid qualifications recognised by the Security Industry Authority (SIA).

Intended Audience

The **Level 3 Certificate in First Response Emergency Care (RQF)** is a regulated and nationally recognised qualification specifically designed for those seeking a career in the emergency services, ambulance service, the event and security medical sector or those who work in high risk workplaces.

Course Overview

Over a 5-day period, Learners will gain the knowledge, skills and competencies needed to deal with a range of Prehospital care emergencies, such as: managing a patient's airways, catastrophic bleeding, management of fractures, medical emergencies and more.

Assessment Methods

13 x Practical assessments, 3 x Theory assessments (Multiple Choice Question Papers) and 4 x Skills tests



Level 1 Award in Fire Safety (RQF)

Course duration: 4 Hours

Validity: 3 Years

Accreditation: Quallsafe Awards (Ofqual RQF Framework)

An awareness course for staff of any business but particularly those with increased fire risk through processes or storage.

Delegates are trained to recognise and mitigate fire hazards and reduce the risk to human life and property in the event of a fire emergency.

Completion:

On successful completion the delegates will be awarded the QCF level 1 award in Fire Safety.



Level 2 Award in Fire Safety (Fire Warden) (RQF)

Course duration: 6 Hours

Validity: 3 Years

Accreditation: Quallsafe Awards (Ofqual RQF Framework)

Level 2 fire safety training meets the requirements for most workplace training needs under the Fire (Scotland) Act.

We often work with your own Fire Safety Risk Assessment and inspect premises to make training bespoke and effective

Delegates are trained to understand fire documentation in the workplace, carry out basic fire inspections, react appropriately during and alarm and recognise when it is appropriate to attempt to tackle small fires. All delegates will handle, and have the chance to discharge live extinguishers.

Completion:

On successful completion the delegates will be awarded the QCF level 2 award in Fire Safety, and accept the responsibilities expected of an employer to manage fire safety in most work premises.



Level 2 Award in Manual Handling (RQF)

Course duration: 6 Hours

Validity: 3 Years

Accreditation: Quallsafe Awards (Ofqual RQF Framework)

Any staff who could be expected to manually reposition loads of any description using bodily force to lift, lower, push, pull or otherwise must be trained to do so in a safe manner. Not only does training encourage the workforce to carry out their tasks without injury but also to think about the load and plan the movement to avoid damage to surroundings and to the load itself.

This course contains theory and practical elements including lifting and the use of mechanical aids. We will attempt to replicate specific tasks typical to your own workplace making the training much more relevant and effective.

Completion:

On completion of the course and assessment, the delegates will receive the QA Accredited (QCF), nationally recognised Safe Moving and Handling certificate, they will be equipped to dynamically risk assess manual handling tasks



Level 2 Award in Safe moving and Handling of People (RQF)

Course duration: 14 Hours

Validity: 3 Years

Accreditation: Quallsafe Awards (Ofqual RQF Framework)

The Health and Social Care sector had the highest number of reported handling injuries in 2013/14?

The QA Level 2 Award in Moving People Safely (QCF) is a regulated and nationally recognised qualification designed for those who work, or intend to work, in a role that involves assisting and moving people. It is the perfect course for those working in a variety of health and social care environments such as care homes.

Completion:

Successful candidates will learn the key principles of safe handling and how to apply these in their workplace. They will also practise a range of techniques, ensuring that they leave the course confident in the safe moving and handling of people in various situations.



Level 1 Award in Workplace Health & Safety (RQF)

Course duration: 4 Hours

Validity: 3 Years

Accreditation: Quasafe Awards (Ofqual RQF Framework)

Covering a range of topics including

- Roles and responsibilities of employers and employees
- Hazards and risks
- Manual handling
- Hazardous substances
- Machinery and vehicles
- Electricity
- Personal Protective Equipment

Completion:

With all subjects covered in just 4 hours, this course is ideal for providing employees with a basic understanding of workplace health and safety whilst helping employers to fulfil their legal duties



Level 2 Award in Workplace Health & Safety (RQF)

Course duration: 6 Hours

Validity: 3 Years

Accreditation: Quallsafe Awards (Ofqual RQF Framework)

Every employer in every workplace must meet their obligations under the health and safety at work act and subsequent regulations. For larger organisations this may mean a consultant or dedicated H&S manager. For smaller organisations it is more effective to train key members of staff to understand these obligations.

Covering more topics and in more detail than the Level 1 course, the level 2 is more suited to more hazardous workplaces

Completion:

On successful completion the delegates will understand the reasons for compliance in the workplace and how this affects safety and production. The training will empower employees and supervisors to confidently address health and safety issues in the workplace and ensure their company procedures are adequate and effective.



Level 3 Award in Workplace Health & Safety (RQF)

Course duration: 26 Hours Total Qualification

Validity: 3 Years

Accreditation: Quasafe Awards (Ofqual RQF Framework)

Ideal for those who are aspiring to, or are presently working at a supervisory or management level and wish to enhance their health and safety knowledge.

During this course, Learners will cover a range of health and safety topics, including: understanding the requirements for health, safety and welfare in the workplace, legal requirements, the benefits of using a health and safety system and understanding the risks and control methods for common workplace hazards.

Completion:

On successful completion the delegates will understand the benefits of an effective Health and Safety Management system. They will be equipped to deal with health and safety issues in the workplace and ensure their company policies & procedures are adequate and effective.



Level 3 award in Workplace Risk Assessment (RQF)

Course duration: 13 Hours

Validity: Recommended refresher every 3 Years

Accreditation: Quallsafe Awards (Ofqual RQF Framework)

ideal for those who have a responsibility for conducting risk assessments in low risk environments, such as supervisors and managers. This qualification is also suitable for those who significantly contribute to the risk assessment process, e.g. team leaders and technicians.

Based around the HSE 5 point plan and guide to Risk assessment, delegates will gain an understanding of how effective risk assessment can be used as a tool for efficient work practice.

Completion:

Successful candidates will learn the key principles of risk assessment and how to apply these in their workplace. Following successful assessment the delegates will be able to accept or assist with the employers legal obligation to carry out effective risk assessment of the workplace.



REHIS Level 5 Award in Elementary Health & Safety (SQA)

Course duration: 6 Hours

Validity: 3 Years

Accreditation: Royal Environmental Health Institute for Scotland (SQA Framework)

Every employer in every workplace must meet their obligations under the health and safety at work act and subsequent regulations. For larger organisations this may mean a consultant or dedicated H&S manager. For smaller organisations it is more effective to train key members of staff to understand these obligations. The REHIS award does just that, covering a variety of topics but focusing on compliance and risk assessment throughout

Completion:

On successful completion of the assessment the delegates will understand the reasons for compliance in the workplace and how this affects safety and production. The training will empower employees and supervisors to confidently address health and safety issues in the workplace and ensure their company procedures are adequate and effective.



Level 2 Award in Health & Safety for Social Care (RQF)

Course duration: 8 Hours

Validity: 3 Years

Accreditation: Quasafe Awards (Ofqual RQF Framework)

Every employer in every workplace must meet their obligations under the health and safety at work act and subsequent regulations. Having the right training for your workplace to help staff understand their role is key to effective health and safety management. Ideal for those who work directly with patients or clients in a health and social care setting such as:

- Hospitals
- Care Homes
- Day Care Centres
- Providing home care

Completion:

On successful completion, delegates will understand, and be able to actively contribute to their employers' health and safety management system,



Level 2 Award in the Control Of Substances Hazardous to Health (RQF)

Course duration: 4 Hours

Validity: 3 Years

Accreditation: Quasafe awards (Ofqual QCF Framework)

Under the COSHH regulations, any employer using, storing, transporting or creating a substance which may be deemed to be hazardous to health must assess the risk to health of anyone potentially effected, and adequately control these risks. Training the staff who come into contact with the substances is the most effective way to ensure this is carried out. The course will cover the assessment and management of risk from:

- Procured substances such as chemicals
- Dust and Fumes
- Storage considerations
- Environmental Protection

Completion:

Successful candidates will be awarded the qualification and be well placed to carry out effective risk assessment.



BAF Safe Use of Abrasive Wheels

Course duration: 4-6 Hours

Validity: 3 Years

Accreditation: British Abrasives Federation

The use of cutting and grinding equipment contributes substantially to the number of accidents across a range of industries. Employers have an obligation to control these risks, the most effective way to do this is to provide adequate training.

The BAF are recognised by the HSE as the leading authority in the UK. We, as Scotland's only fully accredited BAF centre, offer the most effective training to protect operators and anyone else affected by the hazards. The course covers:

- The law and Abrasive Wheels
- Selection and use of the correct tools and accessories
- Hazards and personal protection
- Controlling the risks

Completion:

Successful candidates will be awarded the BAF qualification. More importantly they will be able to minimise the risk of injury and work effectively



Level 2 Award Working at Height (RQF)

Course duration: 4 Hours

Validity: 3 Years

Accreditation: Quallsafe awards (Ofqual QCF Framework)

Falls from height are a major contributor to workplace injuries and fatalities, to such an extent that working at height commands its own set of regulations under the Health & Safety at Work Act. Someone is deemed to be working at height whenever they are at a level higher than all or part of their surroundings and a fall to a lower level has the potential to cause injury.

Employees must be trained to minimise the risk to themselves and others around them by understanding the hazards. This is an introductory course but will cover:

- Working from Ladders, raised platforms and Scaffolding
- Awareness of mechanised working at height plant & machinery
- Working around voids and excavations

Completion:

Successful candidates will be able to assess, and minimise, risk from height work, staying safe and working effectively.



Plant and Vehicle Banksman

Course duration: 4 Hours

Validity: 3 Years

Accreditation: JBS (CITB Approved Standard)

Any workplace with vehicles present at any time, presents a risk to workers or members of the public of being struck. Whether this be HGV's loading or offloading, works vans or heavy plant operating on a site. Employers have a duty to ensure the safety of everyone who could be affected by plant or vehicles movements.

Completion:

The course is assessed practically with each delegate requiring to demonstrating that they understand the hierarchy of control and can conduct vehicle operations safely adhering to the banksmanship principles where required. The course includes:

- Risk assessing operations
- Minimising risk by design
- Practically conducting plant and vehicle operations

Slinging Loads and Lifting Operations

A 2 Hour bolt on to the Plant and Vehicle Banksman course. Delegates will be trained to select the correct lifting equipment, inspect, rig and conduct minor lifting operations on site.



Health and Safety Awareness

Course duration: 6 Contact Hours

Accreditation: The Construction Industry Training Board

Overview

This course highlights potential hazards when working on site and provides practical advice on keeping yourself and your colleagues safe. It covers your individual and employer's responsibilities, including what you can do if you think anyone's health and safety is being put at risk.

This course provides health and safety awareness and is endorsed by Build UK as standard training for all operatives on site.

At the end of the course you will have an understanding of:

- The need to prevent accidents
- Health and safety law
- How your role fits into the control and management of the site
- Risk assessments and method statements
- Performing safely and asking for advice
- How to report unsafe acts to prevent an accident

Certification for this course is valid for 5 years. To remain certified in this area, you will need to retake the course before the expiry date.

Progression:

This qualification, held with the CITB H,S&E assessment, allows a delegate to register with the CSCS card scheme.



Site Supervisors Safety Training Scheme

Course duration: 2 Days (1 Day if a current certificate is held)

Accreditation: The Construction Industry Training Board

Overview:

It is endorsed by Build UK as the standard training for all supervisors working on Build UK sites and provides an understanding of health, safety, welfare and environmental issues.

The Course highlights legal responsibilities and the need to promote health and safety to supervise effectively.

Upon successful completion of the course you will have an understanding of:

- Health and safety law and how it applies to supervisors
- Your supervisory responsibilities in controlling site safely
- Producing effective risk assessments and method statements
- Effective site inductions, toolbox talks and briefings
- Monitoring site activities effectively
- Timely intervention when bad practice is identified

Certification for this course is valid for 5 years.



Site Managers Safety Training Scheme

Course duration: 5 Days (2 Days if a current certificate is held)

Accreditation: The Construction Industry Training Board

Overview:

It covers all relevant legislation affecting safe working in the building, construction and civil engineering industries. It highlights the need for risk assessment in the workplace, the implementation of the necessary control measures and adequate communication to sustain a health and safety culture within the workforce.

This course is endorsed by Build UK as the standard training for all construction managers.

At the end of the course you will be able to:

- implement all health, safety, welfare and environmental legislation affecting your daily work
- implement new guidance and industry best practice
- state your duties and responsibilities with regards to health, safety, welfare and the environment
- Adequate planning for health and safety in the project plan

Certification for this course is valid for 5 years.



Directors Role for Health & Safety

Course duration: 6 Contact Hours

This one-day interactive course has been designed for company directors with the aim of recognising the human and financial implications of health and safety legislation non-compliance.

Overview

The course will provide a summary of how to promote a positive organisational culture for health and safety. Workshop exercises throughout the day will give delegates the opportunity to discuss their thoughts about health and safety and their responsibilities in an open forum.

This course is endorsed by Build UK as the standard training for all senior managers and company directors.

At the end of the course delegates will be able to:

- recognise the moral, economic and legal costs/implications of decisions made in the boardroom that make their business liable
- understand the importance of strategic management of risks
- appreciate the consequences of failing to manage health and safety effectively
- understand the importance of competent duty holders cooperating, communicating and coordinating health and safety throughout the whole project
- recognise the need to appoint competent health and safety assistance and the limitations of such an appointment
- identify the basic tools for introducing a proactive health and safety culture into their organisation

Certification for this course is valid for 5 years.



Site Environmental Awareness Training Scheme

Course duration: 6 Contact Hours

Accreditation: The Construction Industry Training Board

This one-day interactive course has been developed for site supervisors/managers with the aim of providing candidates with an introduction to environmental issues on construction sites

Overview

Designed to meet the basic environmental knowledge that the sub-contract chain are required to prove to major contractors, the course will bring the candidates environmental and sustainability knowledge up to date by giving a thorough overview of the subject, relevant legislation and industry best practice.

It will enable them to identify, control and minimise the environmental impacts of their work and where possible identify environmental improvement opportunities.

Certification for this course is valid for 5 years



Level 1 Award in Health & Safety for Construction (RQF)

Course duration: 40 Guided Learning Hours

Accreditation: Qualsafe awards (Ofqual QCF Framework)

In depth training for anyone working in, or aspiring to work in the construction industry. Carried out on site with flexible learning packages bespoke to suit the skills and experience of the site operatives. This training positively assists the management of health and safety on site, training the workforce to understand the benefits of best practice and safe working.

Completion:

Delegates will learn to interpret, and produce basic, site documents such as risk assessments and method statements, spotting hazards on site and putting control measures in place. The course encompasses practical training in skills such as: manual handling, work at height, substances in construction, working around plant and site signage.

Progression:

Successful completion of the Level 1 H&S for construction course qualifies delegates , who also pass the CITB Health, Safety and Environment Assessment, to apply for registration with the CSCS Scheme.



BAF Safe Use of Abrasive Wheels

Course duration: 4-6 Hours

Validity: 3 Years

Accreditation: British Abrasives Federation

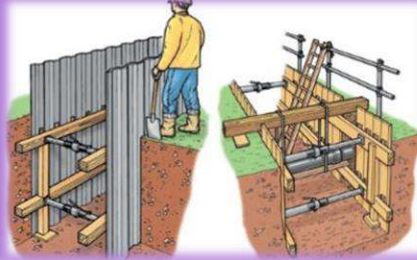
The use of cutting and grinding equipment contributes substantially to the number of accidents across a range of industries. Employers have an obligation to control these risks, the most effective way to do this is to provide adequate training.

The BAF are recognised by the HSE as the leading authority in the UK. We, as Scotland's only fully accredited BAF centre, offer the most effective training to protect operators and anyone else affected by the hazards. The course covers:

- The law and Abrasive Wheels
- Selection and use of the correct tools and accessories
- Hazards and personal protection
- Controlling the risks

Completion:

Successful candidates will be awarded the BAF qualification. More importantly they will be able to minimise the risk of injury and work effectively



Confined Spaces in Construction

Course duration: 4 Hours

Validity: 3 Years

Accreditation: JBS (CITB Approved Standard)

Overview:

Working in confined spaces offers the construction worker with a range of hazards, many of which pose a direct threat to life. This course will give all operatives an understanding of these hazards, and how to interpret the site risk assessment, as well as carrying out ongoing dynamic assessment of the risks during confined space operations.

The course will cover areas such as:

- Open excavations
- Underground pipes and chambers
- Gas, fumes and substances
- Personal Protection Equipment

Completion:

Successful candidates achieving the qualification will have an adequate knowledge to determine a confined space, and how and when they can work safely in confined spaces.



Service Avoidance in Excavations

Course duration: 4-6 Hours

Validity: 3 Years

Accreditation: JBS (CITB Approved Standard)

Overview:

Service strikes have the potential to cause serious injury and even death, but even the most minor will cause disruption to site works and usually substantial cost.

This course is based around the standard 5-point plan for service detection and avoidance, it is the recognised hierarchy of measures to minimise the risk of strike during excavations. Practical exercises throughout the course, at each stage of the plan ensure that delegates are learning best practice. The plan includes the use of signal generators and cable avoidance tools in various configurations to increase the effectiveness of the scan.



Plant and Vehicle Banksman

Course duration: 4 Hours

Validity: 3 Years

Accreditation: JBS (CITB Approved Standard)

Any workplace with vehicles present at any time, presents a risk to workers or members of the public of being struck. Whether this be HGV's loading or offloading, works vans or heavy plant operating on a site. Employers have a duty to ensure the safety of everyone who could be affected by plant or vehicles movements.

Completion:

The course is assessed practically with each delegate requiring to demonstrating that they understand the hierarchy of control and can conduct vehicle operations safely adhering to the banksmanship principles where required. The course includes:

- Risk assessing operations
- Minimising risk by design
- Practically conducting plant and vehicle operations

Slinging Loads and Lifting Operations

A 2 Hour bolt on to the Plant and Vehicle Banksman course. Delegates will be trained to select the correct lifting equipment, inspect, rig and conduct minor lifting operations on site.

Construction Skills Certification Scheme (CSCS)

We take the stress out of organising the various stages required to qualify for the scheme by providing the entire package for those working in, or aspiring to work in, the construction industry in the UK. We even provide a flexible route allowing individuals or employers to choose the most suitable CSCS accepted qualifications.

We can give guidance to employers and assist with the administration, keeping your staff safe and compliant.

The Route to Your Card



Construction Site Safety Documentation

Effective management of health, safety, welfare and the environment not only demonstrates positive commitment to clients and employees, but also promotes project efficiency.

This service is relevant to:

- construction contractors,
- sub-contractors
- commercial clients proposing to carry out construction works

A fully qualified and insured member of our team can be on hand to offer advice on compliance with Health & Safety Law, including the Construction (Design & Management) Regulations for clients, designers and contractors involved in small scale construction projects.

Our construction professional will work with contractors and sub-contractors throughout their involvement with a project, and produce:

- The Construction Phase Plan
- Risk Assessments
- Method Statements
- The Training Matrix

As well as liaising with other stakeholders in the project to ensure compatibility and efficiency.

Portable Electrical Appliance Testing

PAT testing is the most effective way to comply with the 'Electricity at Work' regulations as well as the 'Provision and Use of Work Equipment Regulations' when working with electrical equipment or tools.

Our PAT testing engineer is available to visit any workplace including:

- Offices and Shops
- Warehouses
- Workshops and Garages
- Construction Sites

We can test 240v and 110v

- I.T
- Power tools
- Lamps and Lighting
- Extensions cables
- chargers
- Splitters
- Kitchen appliances
- Etc...

Anything with a mains plug should be tested, as well as the sockets and mode of use surrounding the appliance.

Our standard rate for testing is-

£120.00 for the first 100 items plus £0.75 per further Item

In some areas, we will include travel costs in the basic rate. Contact us for an accurate quotation.



Face Fit Testing

Extract from HSE document OC 282/28

“Where respiratory protective equipment (RPE) is used as a control measure under Health and Safety Legislation, it is vital that the selected RPE is adequate and suitable. RPE must reduce exposure to as low as reasonably practicable, and in any case to an acceptable level (e.g. below any applicable Workplace Exposure Limits or Control Limits). To ensure that the selected RPE has the potential to provide adequate protection for individual wearers, the ACoPs supporting COSHH, CAR and CLAW stipulate that tight-fitting RPE must be fit tested as part of the selection process. This will help to ensure that inadequately fitting facepieces are not selected for use. Ill-fitting facepieces can create inward leakages of airborne contaminants.”

Any task where an employer has deemed it necessary to provide a face piece, or ‘dust mask’ to protect an employee from airborne contaminants then this equipment must be tested with the employee to ensure that:

- The employee knows how to fit the mask properly
- The model of mask is suitable for the individual
- The individual understands the importance of correct care
- The RPE offers effective protection without interfering with other PPE

We provide an accredited face fitting service at your place of work from

£12.50 per test

We can also supply masks

Charity and Social Enterprise work

We are proud to be giving our time and resources to positively influence the lives of disadvantaged and underprivileged young people through:



JB Safesite

Safety Training and Consultancy
Acres of Keillour East
Methven
Perth
PH1 3RA

admin@jbsafesite.com

01738 840 304

07504 298 560